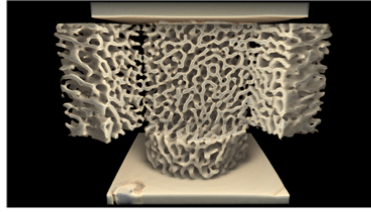




Bone Compression of Horse Trabeculae

Anthony Jones
Applied Mathematics, ANU

Ajay Limaye
ANU Supercomputer Facility Vizlab



Fossil whale coclear

Gavin Young
Department of Earth and Marine Sciences, ANU

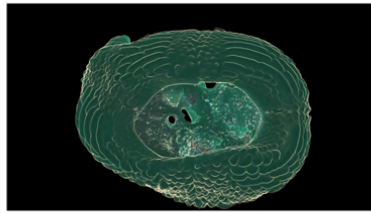
Ajay Limaye
ANU Supercomputer Facility Vizlab



Ossified optic capsule of placoderm fish

Gavin Young
Department of Earth and Marine Sciences, ANU

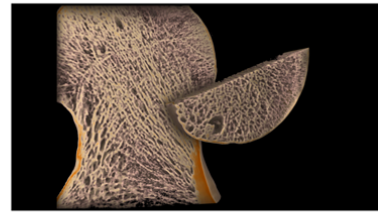
Ajay Limaye
ANU Supercomputer Facility Vizlab



Human Hip Bone

Anthony Jones
Applied Mathematics, ANU

Ajay Limaye
ANU Supercomputer Facility Vizlab



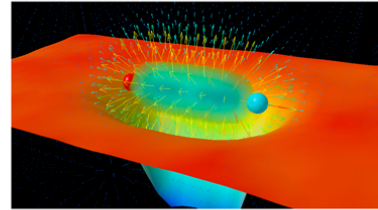
6dF Galaxy Survey: Beyond the Crux

Visualisation: Paul Bourke
Audio: Peter Morse, Glenn Rogers
WASP, University of Western Australia



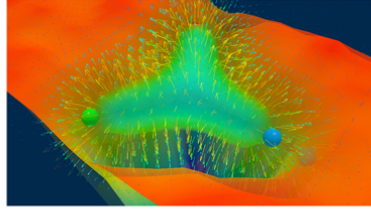
Quantum Chromodynamic Field Structure of the Vacuum

Derek Leinweber, Peter Moran
CSSM Lattice Collaboration
University of Adelaide



Gluon Flux Distribution within the Proton

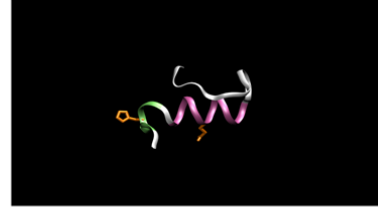
Derek Leinweber
CSSM Lattice Collaboration
University of Adelaide



Effects of Electric Field Stress on Protein Conformation

Akin Budi, F. Sue Legge, Irene Yarovsky
RMIT University

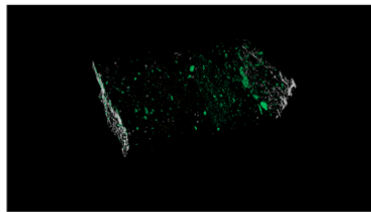
Herbert Treutlein
Cytopia Pty Ltd



Volumetric rendering of Shale Rock

Rob Hough (CSIRO Exploration & Mining)
Ben Clennell (CSIRO Petroleum Resources)

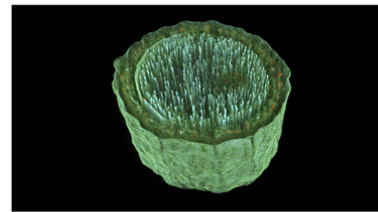
Andrew Squelch
IVEC



Volumetric rendering of an Acacia plant stem

Rob Hough (CSIRO Exploration & Mining)

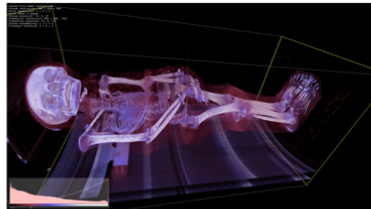
Andrew Squelch
IVEC



Egyptian Mummy

MONA
(Museum of Old and New Art)
Hobart

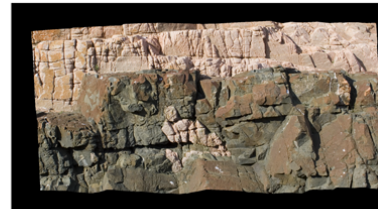
Paul Bourke
WASP, University of Western Australia



3D reconstruction from stereoscopic photograph pairs

Florian Füsseis and Klaus Gessner
School of Earth and Geographical Sciences
University of Western Australia

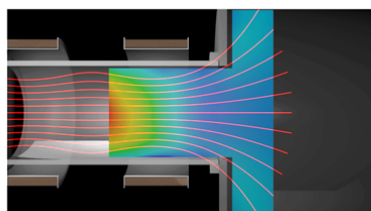
Hagen Deckert
University of Mainz, Germany



Magnetic Field Studies for Plasma Thrusters

Wes Cox
Space Plasma and Plasma Propulsion (SP3) ANU

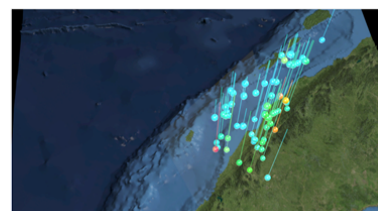
Rhys Hawkins
ANU Supercomputer Facility Vizlab



Sumatra 8.2 Magnitude Earthquake

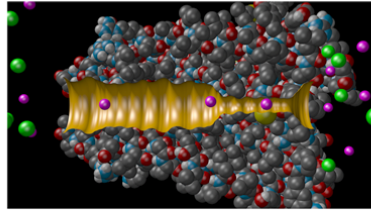
Malcolm Sambridge
Research School of Earth Sciences, ANU
Phil Cummins
Geoscience Australia

Rhys Hawkins
ANU Supercomputer Facility Vizlab



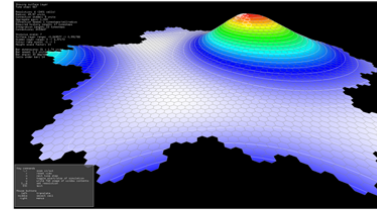
Potassium Ion Channel Molecular Dynamics Simulation

Shin-Ho Chung
Research School of Biological Sciences, ANU
Rhys Hawkins
ANU Supercomputer Facility Vizlab



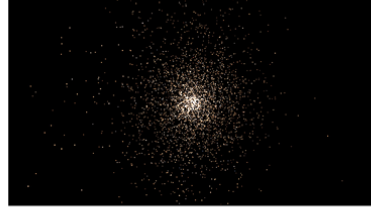
Transmission of waves through the neurons of the cortical mantle

James Wright
Liggins Institute, University of Auckland
Paul Bourke
WASP, University of Western Australia



N-body Stellar Cluster Simulation

David G. Barnes and Jarrod R. Hurley
Swinburne University of Technology



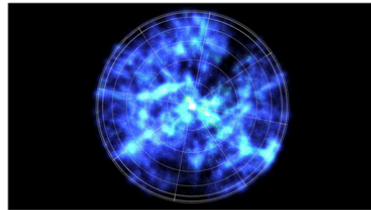
The Milky Way Galaxy and its Satellites

David G. Barnes and Duncan A. Forbes
Swinburne University of Technology



The 6dF Galaxy Survey

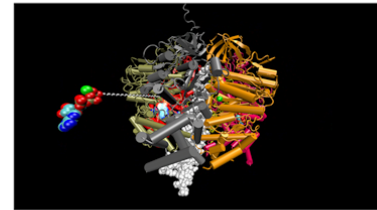
Visualisation by Christopher J. Fluke
Swinburne University of Technology



Supercomputer simulation of Nano-Molecular Motors

Alexe Bojovschi, Ming Liu, Richard Sadus
Music: Tu Cam Le
Swinburne University

Paul Bourke
WASP, University of Western Australia



Boolardy Station: MIRA Radio Telescope Site

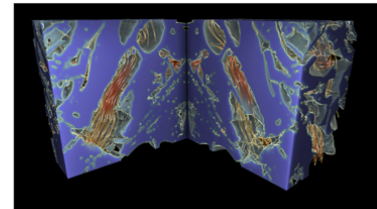
Paul Bourke
WASP - Communication Studies - Physics
University of Western Australia
Photography: Peter Morse



Vector field of Brownian particles diffusing through a porous limestone

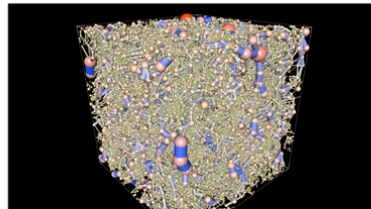
Christoph Arns
Applied Mathematics, ANU

Ajay Limaye
ANU Supercomputer Facility Vizlab



Pore-Throat network of a porous limestone

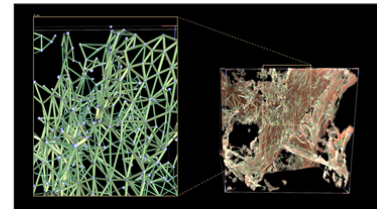
Adrian Shepard
Applied Mathematics, ANU
Ajay Limaye
ANU Supercomputer Facility Vizlab



Micron sized fractures in dolomite Rendering Pore-Throat network with ScreenLens

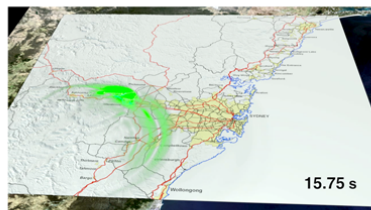
Auke Barnhoorn
Research School of Earth Sciences, ANU

Ajay Limaye
ANU Supercomputer Facility Vizlab



Seismic Wave Propagation

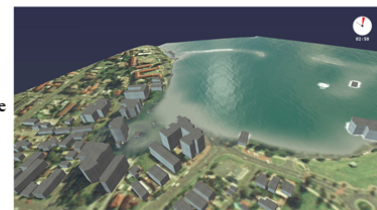
Phil Cummins
Geoscience Australia
Drew Whitehouse
ANU Supercomputer Facility Vizlab



Tsunami Impact Modelling

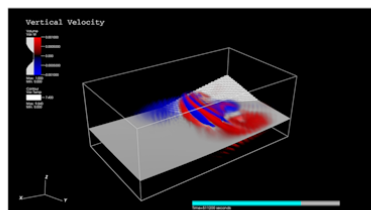
Ole Nielsen
Geoscience Australia
Australian Emergency Management Committee
Catastrophic Disaster Working Group

Drew Whitehouse
ANU Supercomputer Facility Vizlab



Vortices & Topography

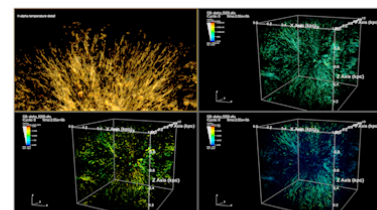
William K Dewar
Florida State University
Andrew McC. Hogg
Australian National University
Drew Whitehouse
ANU Supercomputer Facility Vizlab



Starburst-Driven Galactic Winds

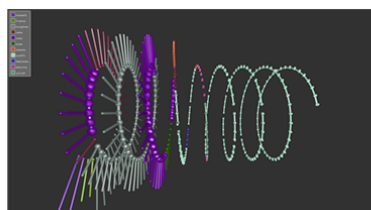
Jackie Cooper & Geoff Bicknell
ANU Research School of
Astronomy and Astrophysics

Drew Whitehouse
ANU Supercomputer Facility Vizlab



Realtime visualisation of HPC PBS Queues

Paul Bourke
WASP, University of Western Australia



Antarctica Virtua

Peter Morse
University of Western Australia

