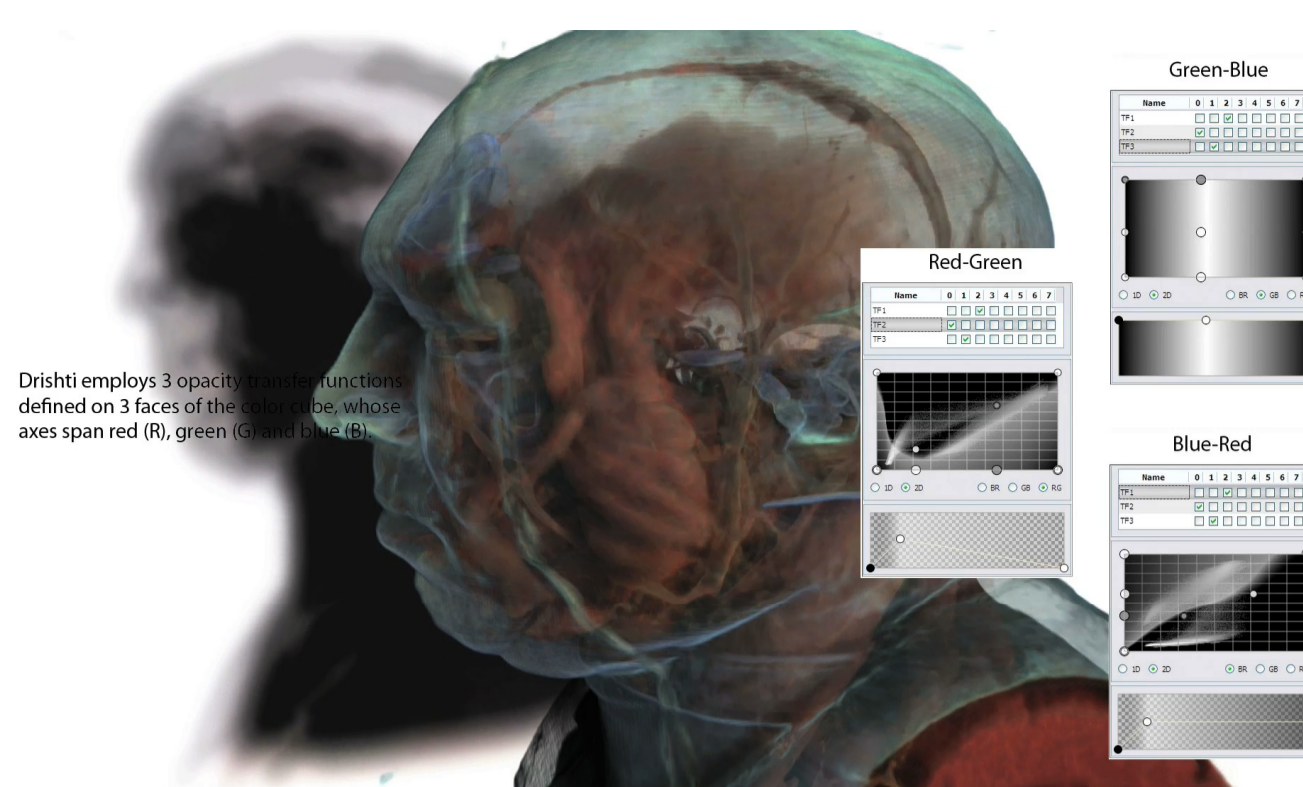


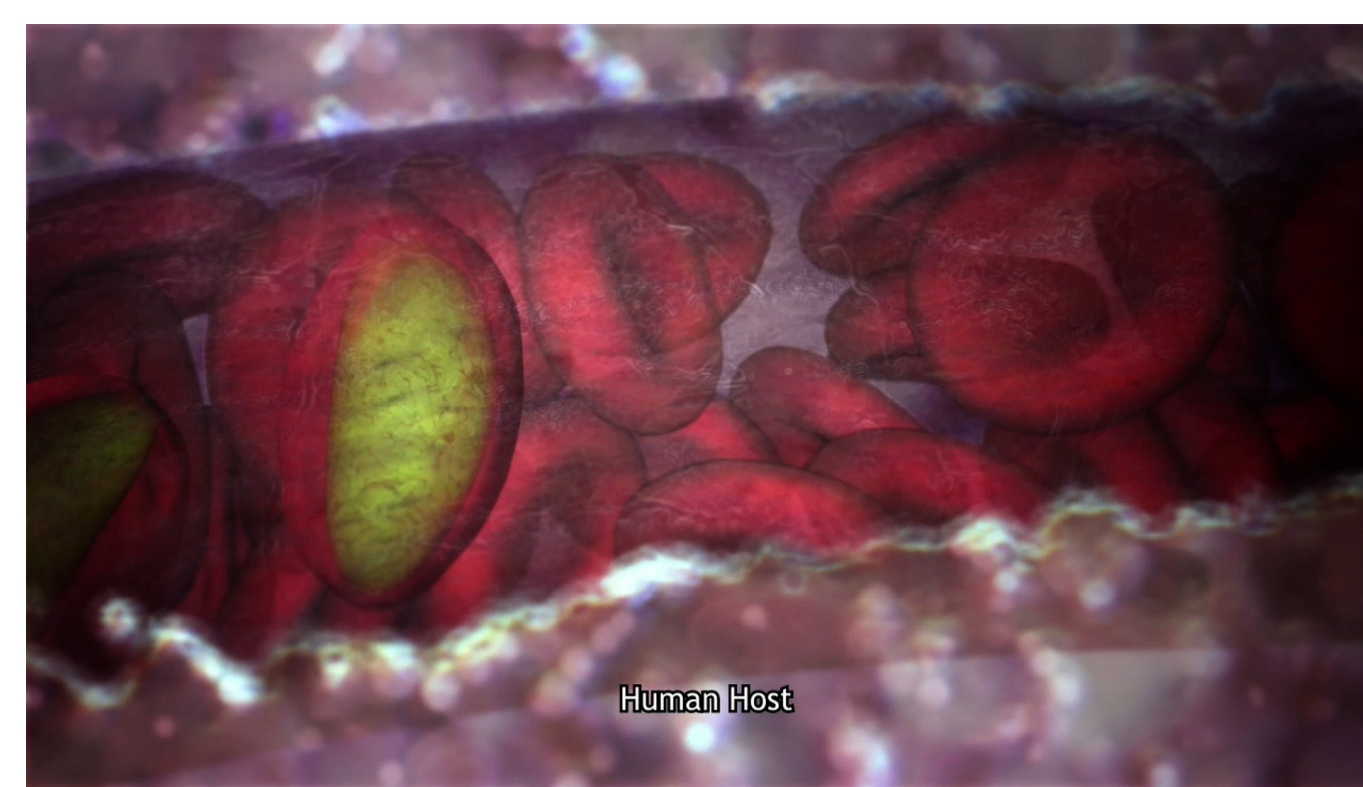
OzViz 2008 Visualisation Showreel

Contributors:

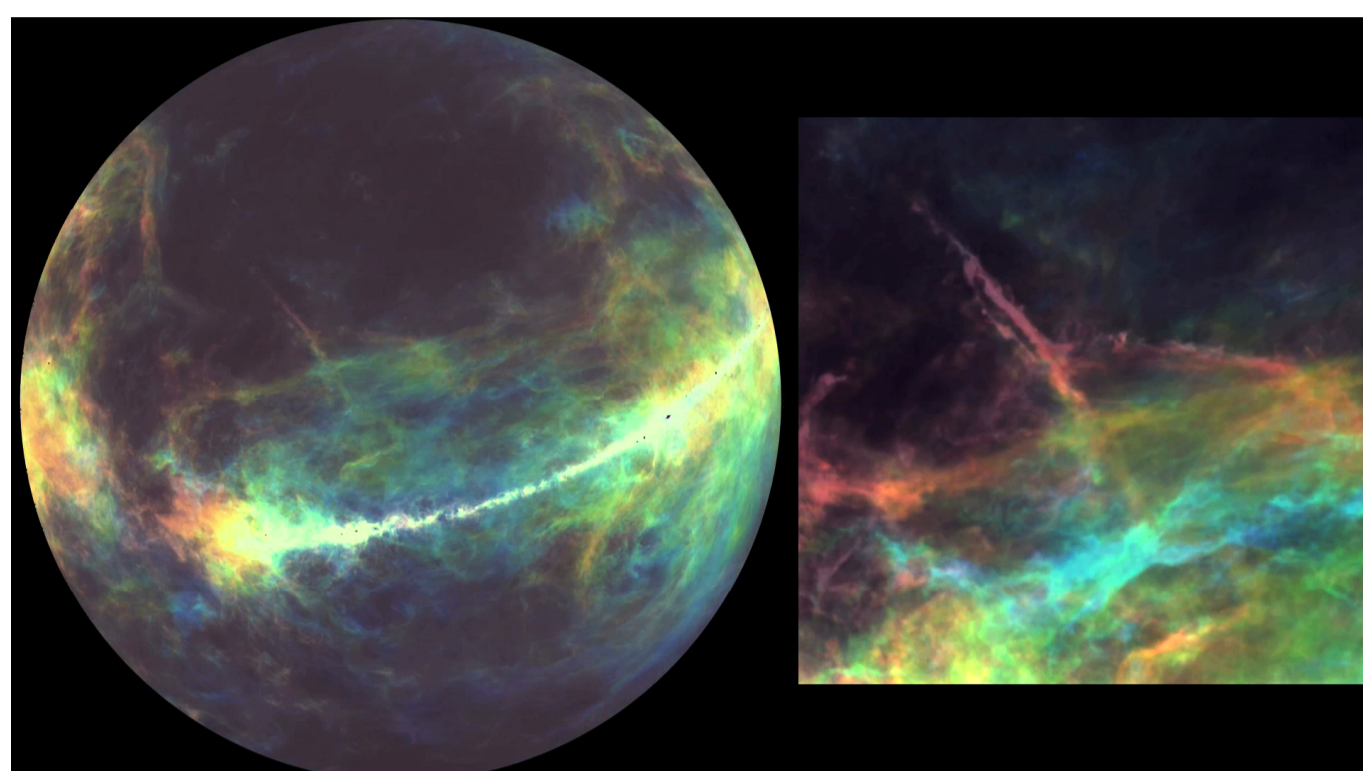
Leslie AlMBERG, David Barnes, Drew Berry,
Paul Bourke, Ajay Limaye, Peter Morse,
Toby Potter, Elizabeth Stark, Lister Staveley-Smith,
Kate Trinajstić, James Wright



Drishti: Examples of RGBA volumes.
Ajay Limaye (VizLab, ANU).
Data: Visible Human Project
(US National Library of Medicine)



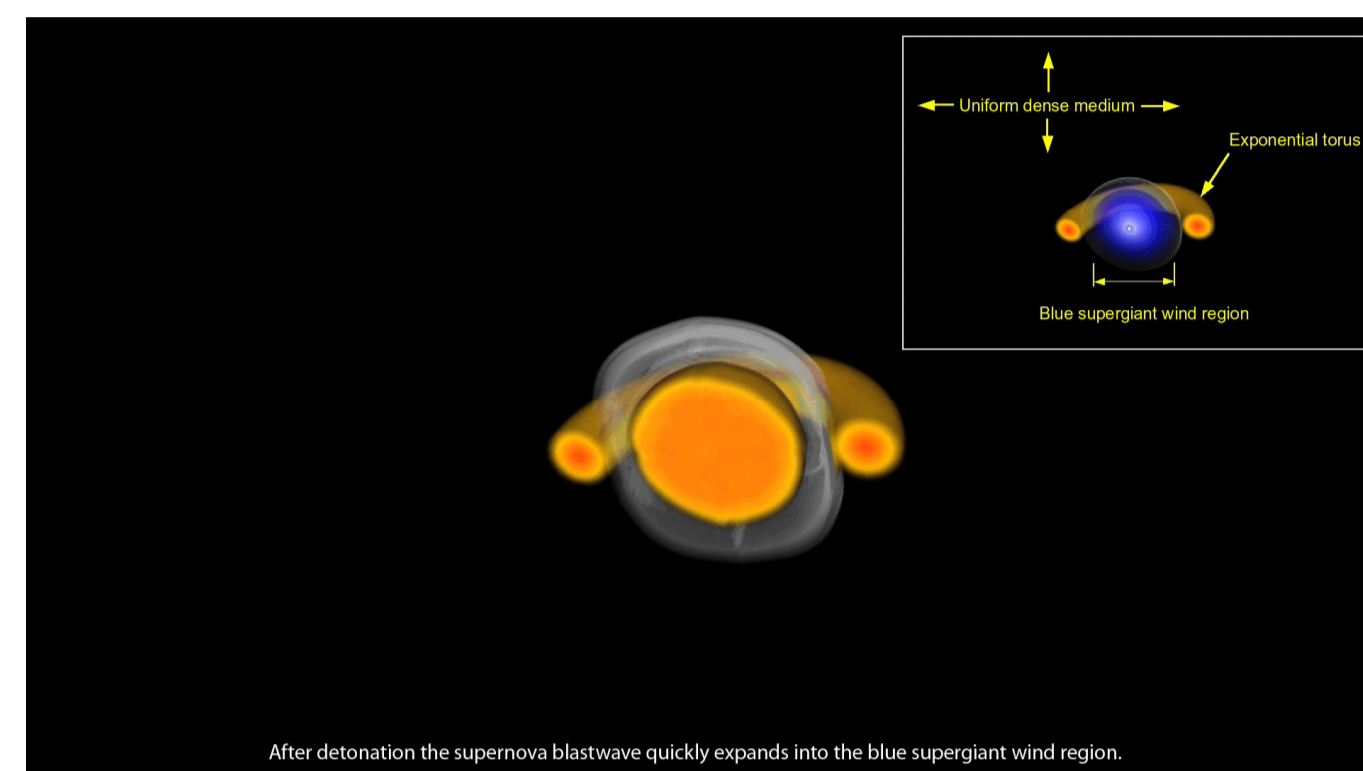
The Malaria Lifecycle.
Drew Berry
(The Walter and Eliza Hall Institute of Medical Research).



GASS (Galactic All-Sky Survey).
Mapping the distribution of hydrogen gas in the Milky Way.
Visualisation: Paul Bourke (UWA).
Data: Supplied by Lister Staveley-Smith (UWA).



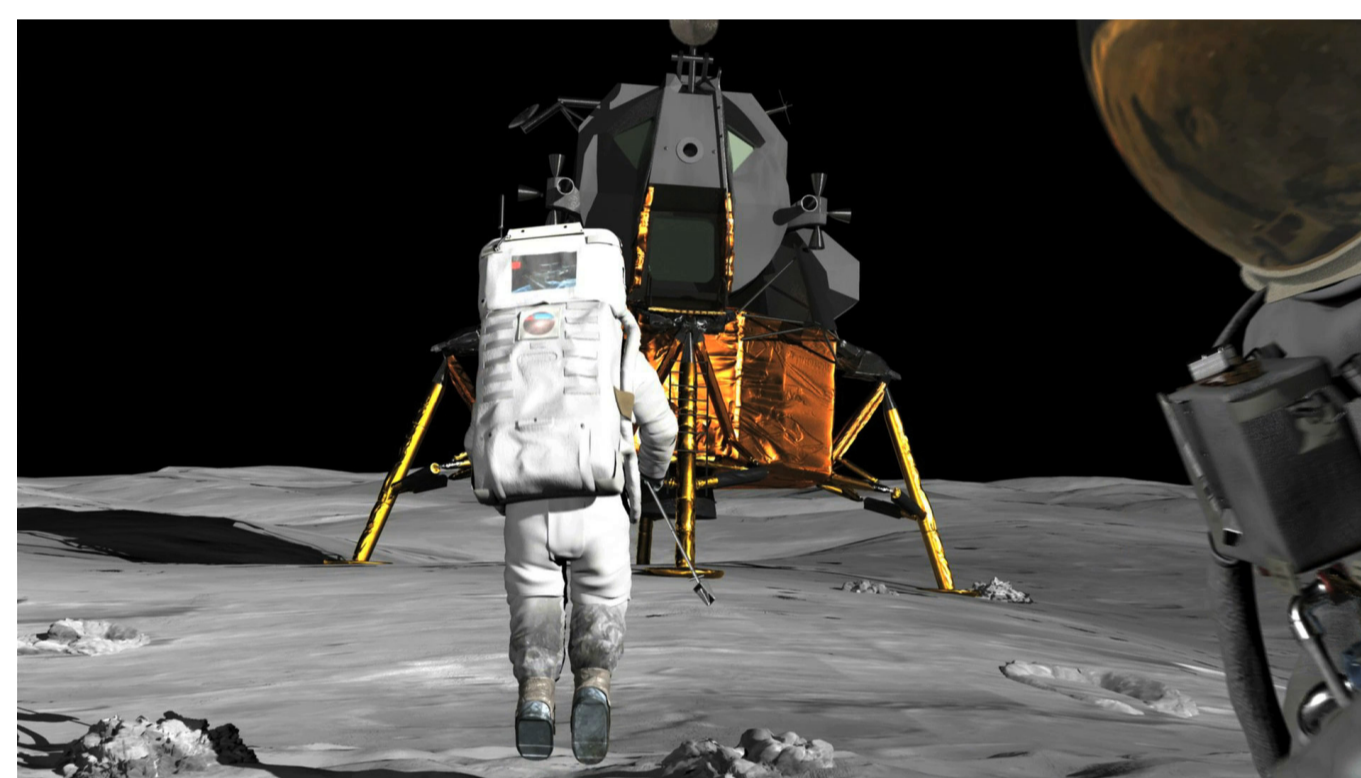
Fossil Visualisation: Placoderm fish.
Visualisation: Paul Bourke (UWA).
Data: Supplied by Kate Trinajstić (UWA),
Tim Sendon (ANU),
John Long (Museum Victoria).



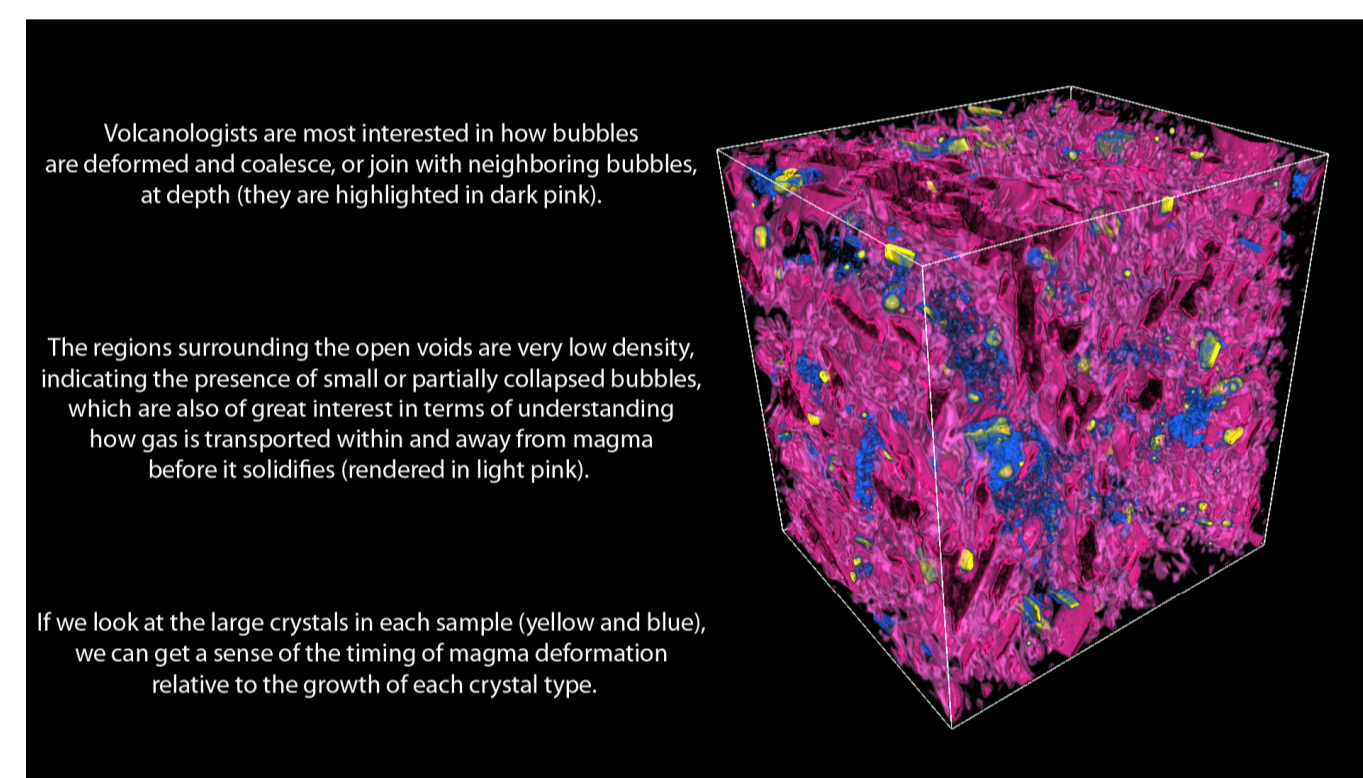
Simulating the expansion of a supernova remnant.
Visualisation: Toby Potter (UWA),
Lister Staveley-Smith (UWA).
Supported by iVEC.



Stellar cluster evolution.
~100 million years of evolution.
Visualisation: David Barnes (Swinburne).
Simulation data: Jarrod Hurley (Swinburne).
Software: S2PLOT.



Bigger than Big.
Swinburne Centre for Astrophysics and Supercomputing.
A digital stereoscopic 3D experience.



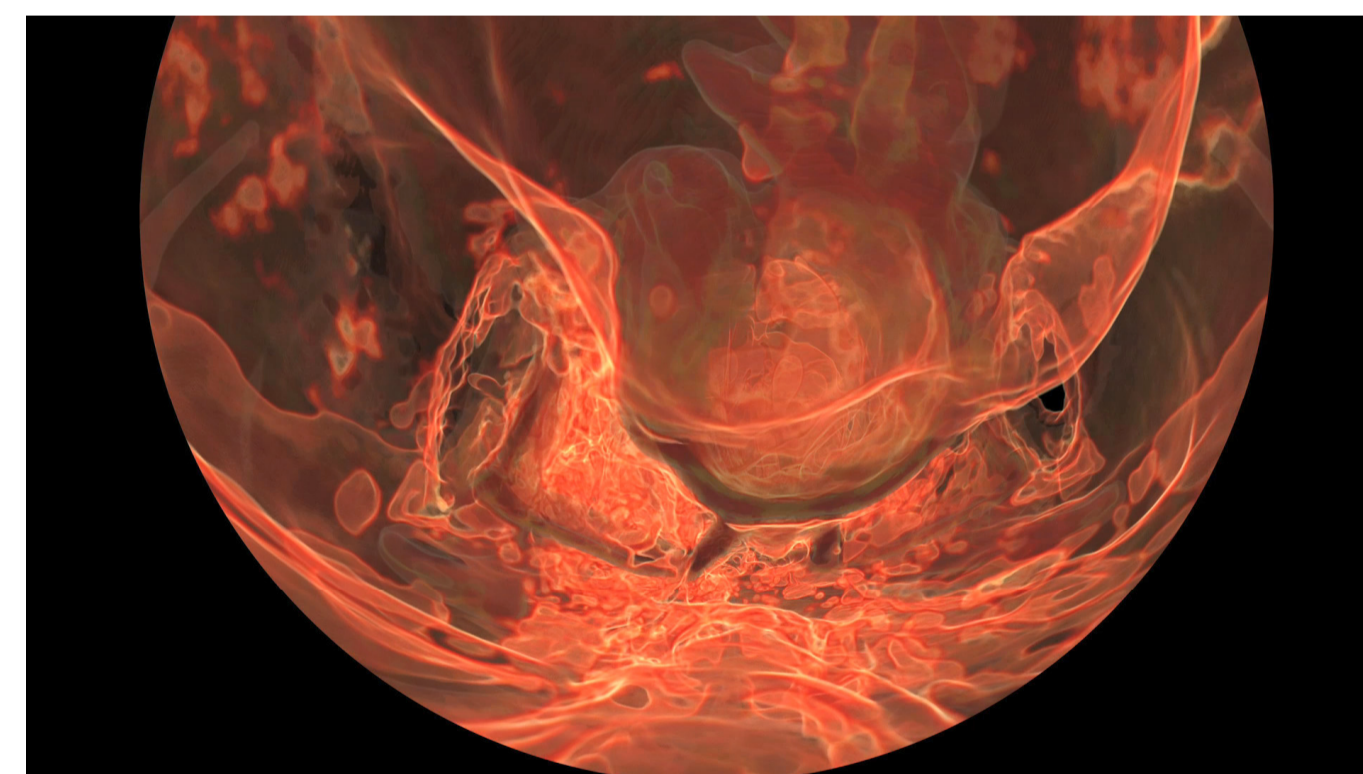
Volcanic plumbing within a single lava dome.
Leslie AlMBERG.
Supported by iVEC,
Arctic Regions Supercomputing Facility,
National Science Foundation.



Egyptian mummy (CAT scan).
Visualisation: Paul Bourke (UWA).
Data courtesy of Mona,
(Museum of Old and New Art).



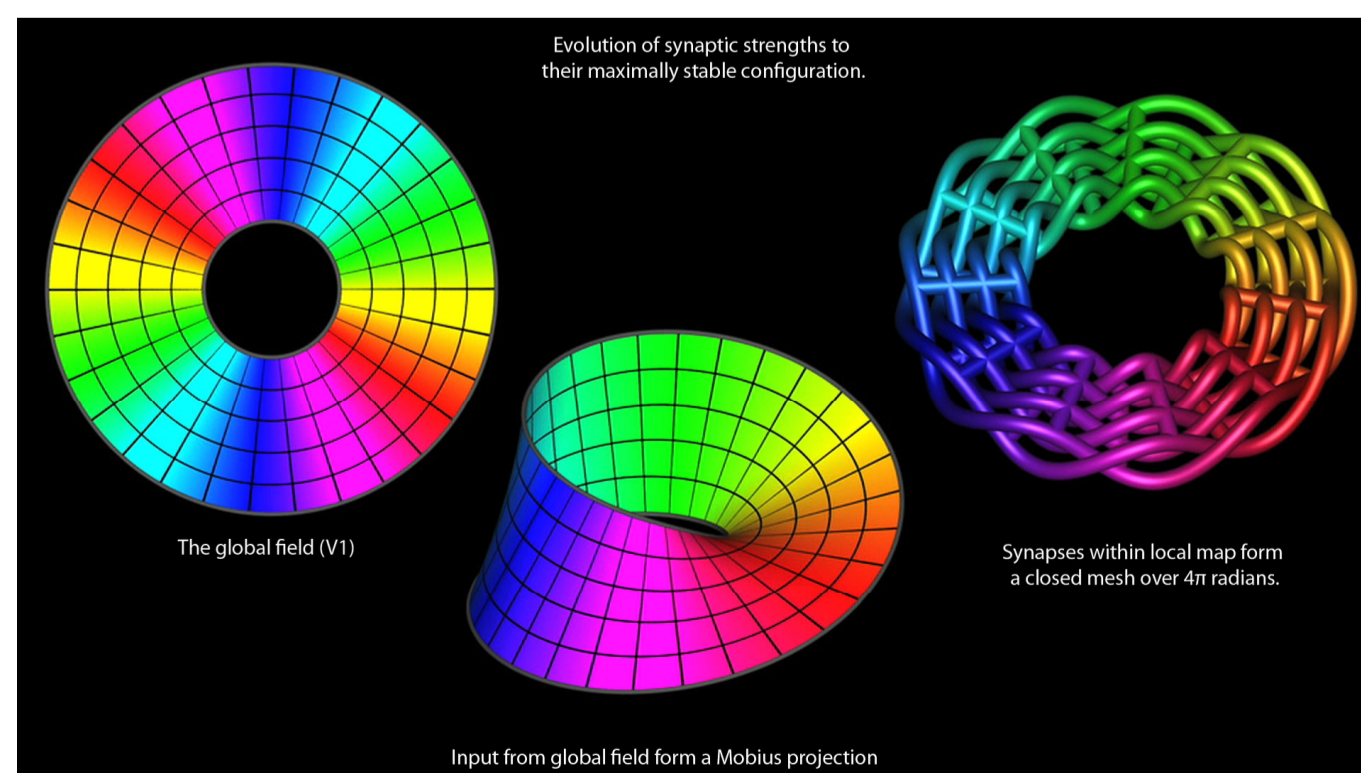
Frozen in Time.
Peter Morse.
Supported by Horizon - The Planetarium,
The Australian Antarctic Division,
Mawsons Huts Foundation.



Artforms of nature: A new way of seeing.
Ajay Limaye (ANU),
Peter Morse,
Paul Bourke (UWA).
Contribution to the 2008 ASTC full-dome showreel.



ASKAP site visualisation.
Paul Bourke (UWA).
Photography: Peter Morse.
Aerial data: Landgate.



Mathematical visualisation of cortical anatomy.
Visualisation: Paul Bourke (UWA).
Research: James Wright.
(Liggins Institute and Department of Psychological Medicine,
Brain Research Centre University of Sydney).



iDome: Application examples.
Paul Bourke (UWA).
Ladybug video footage from University of Wollongong.